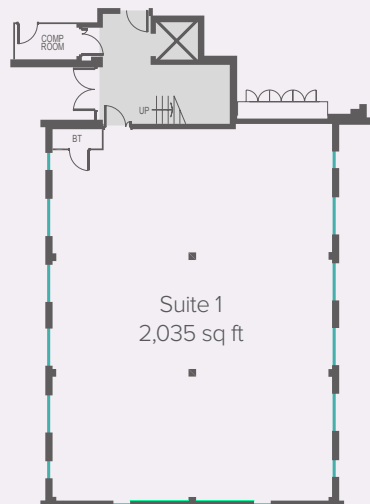




JASON HOUSE
Horsforth

TO LET
Suite 1 - 2,035 sq ft (189 sq m)



INDICATIVE FLOOR PLAN

Specification

The suite has been comprehensively refurbished and benefits from the following:

- Gas fired central heating
- Modern suspended ceiling
- LED lighting
- New carpeting
- Excellent natural light
- Newly decorated
- 3 - compartment perimeter power trunking

ENERGY PERFORMANCE CERTIFICATE

The suite has been assessed to have an EPC rating of B (36).

TERMS

The suite is available by way of a new effective Full Repairing and Insuring lease for a term to be agreed. Further details available on request.

PARKING

There are 6 parking spaces allocated with Suite 1.